



中国动物学会寄生虫学分会联合巴斯德讲坛 疟疾研究国际研讨会

International Symposium on Malaria Research



Dr. Alan F. Cowman

Professor & Deputy Director
Science Strategy
Infection and Immunity Division, WEHI



Dr. Justin Boddey

Associate Professor & Laboratory Head
Infection and Immunity Division, WEHI



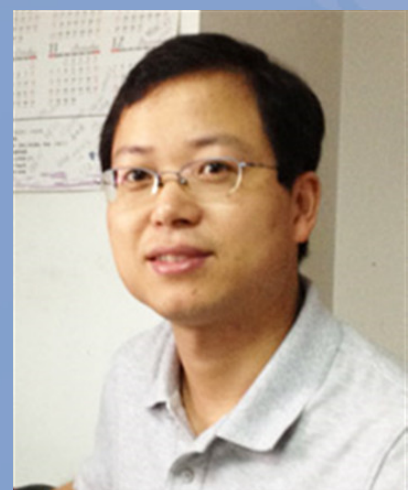
Dr. JingWen WANG

Professor, School of Life Sciences
FuDan University



Dr. Yang CHENG

Associate Professor & President Assistant
Wuxi School of Medicine
jiangNan University



Dr. QingFeng ZHANG

Professor, School of Medicine
TongJi University



Dr. LuBin JIANG

Professor & Deputy Director
Institut Pasteur of Shanghai, CAS

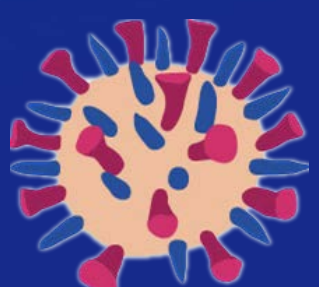


Zong Luo Hall (5th Floor), Hope Hotel

09:30 – 15:30 PM

October 16th, 2019

HOST: Prof. LuBin JIANG



CAS KEY LABORATORY OF MOLECULAR
VIROLOGY & IMMUNOLOGY
中国科学院分子病毒与免疫重点实验室



中国科学院上海巴斯德研究所
Institut Pasteur of Shanghai
Chinese Academy of Sciences