



巴斯德讲坛-特别讲坛系列

Pasteur Colloquium

A New T Cell Defense Against Malaria and Other Parasites

Dr. Judy Lieberman

Chair in Cellular and Molecular Medicine and
Professor of Pediatrics Harvard Medical School

The Lieberman lab studies cytotoxic T lymphocytes (CTL) that are key cells in the immune defense against invading pathogens and cancer. The Lieberman lab also studies how RNA interference (RNAi) regulates normal cell differentiation as well as how it goes awry in cancer, and how membrane damage occurs during inflammatory cell death. Dr. Lieberman graduated from Harvard University in 1969. After earning a Ph.D. in physics from Rockefeller University in 1974, she was a high-energy physicist at the prestigious Institute for Advanced Study in Princeton University. In 1981, she earned M.D. from the joint Harvard-MIT Program in Health, Science, and Technology. In 2008, Dr. Lieberman was elected to the American Academy of Arts and Sciences.

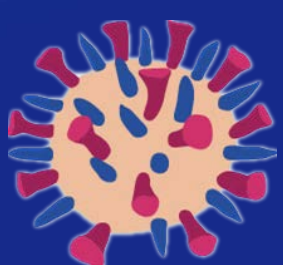


A201, Life Science Research Building

10:00–11:30 AM

November 11th, 2019

HOST: Prof. Xing Liu



CAS KEY LABORATORY OF MOLECULAR
VIROLOGY & IMMUNOLOGY
中国科学院分子病毒与免疫重点实验室



中国科学院上海巴斯德研究所
Institut Pasteur of Shanghai
Chinese Academy of Sciences

